

SCHÜCO

More than a view

Schüco door systems
for a world without walls



www.schueco.uk/view





Creating a home is so much more than simply building or renovating a house. A home provides a feeling of wellbeing and the freedom to embrace our individuality. Home gives us security, belonging and identity.

At Schüco we find it inspiring to see the way our doors and windows are used to create a greater sense of space in a home, filling that space with natural light and providing a greater connection to nature and the outdoors.

Within these pages, I hope to inspire you too with examples of how Schüco is helping transform homes.

Since our family company was founded over seventy years ago, we have grown into an industry leader recognised for our passion and expertise. Our products combine German precision engineering with high-quality British and Irish manufacturing.

Our wide range of made-to-measure aluminium design options ensure there'll be a system that will meet your requirements exactly. Bi-fold and sliding doors from Schüco offer elegant, slim profiles and large areas of clear glass. Level thresholds allow a seamless transition from inside to outdoors, and excellent insulation values mean greater comfort and lower fuel bills. It's details like these that let you know you're investing, not just spending.

And while – quite naturally – we want to add value to our property, we also want to feel that we are doing our best to live sustainably and to pass on a better world to the next generation. That is why Schüco adopts a 360° approach to sustainability, encompassing the whole lifecycle of a product from the design and manufacture, through to the possibility of dismantling the products for recycling.

Experience a new way of living, full of light, air and freedom. So much more than a view.



Pete Temprell

Pete Temprell,
Managing Director
Schüco UK & IRE

Project type:
Residential refurbishment

Schüco products:
ASS 70 FD bi-fold doors
AWS 70 SC windows

Specialist contractor:
Euro Aluminium

Location:
Sussex

Architect:
Sloane and Brown Ltd

Photography:
Tim Crocker

A forever family home
filled with light





"We were looking for a generous, light-filled space and the ability to simply throw open the back of the house and wander in and out effortlessly"

It was far from love at first sight when Hannah and Duncan looked around a 1970s house in Sussex. What changed their minds was the potential to create a light-filled, open plan living space.

"We were moving from a period villa with sizeable rooms," explains Hannah. "When we came to view this house, the unorthodox layout and slight feeling of neglect were a bit dispiriting."

"However, it was essentially a blank canvas and we saw that we could create something more modern and attractive."

The couple wanted to create a sense of inside-outside living with an open plan feel to the ground floor rather than a series of separate spaces.

The three huge sets of bi-fold doors across the back of the house were fundamental to this vision, as they create a seamless transition between the garden and the

interior. These generous areas of glass are echoed on the first floor by French doors and glazed balconies.

Specialist contractor Euro Aluminium recommended the use of Schüco bi-fold doors and windows throughout the project. "We used the ASS 70 FD system for the large bi-fold doors," recalls MD Gabriel Andrisan. "It has an elegant, slim 120 mm profile and we were able to use the same system for the French doors on the first floor."

The result is everything Hannah and Duncan were looking for. "We spent a long time thinking about what we wanted to achieve. We had done our homework and considered Schüco because of the design and quality of their products.

"Now there is so much glass that the house is flooded with light and even in midwinter the slightest glimmer of sunshine keeps the whole space warm and welcoming."

Creating a contemporary light-filled home that honours its industrial heritage

Project type:
Residential extension

Location:
North Wales

Schüco products:
AWS 70 SC windows
FWS 50 façade
ASS 70.HI sliding doors

Architect:
Featherstone Young

Specialist contractor:
CS Glaziers

Photography:
Brotherton Lock



“ I feel very connected to nature and the outdoors. ”

Huw and Enid added a striking extension to their home in North Wales using three core materials to echo the building's industrial heritage as an engine shed: metal, glass and stone.

The couple commissioned award-winning architect Jeremy Young, of Featherstone Young, to design the extension to create more living space and make the most of the breathtaking views.

“The back of the house has a fantastic southern outlook over a bowl of hills and the idea was to open up the building to enable Huw and Enid to live with that lovely backdrop,” says Jeremy.

Jeremy selected Schüco systems to meet the couple's brief of maximising the natural light and connecting the living space with the outdoors. He explains, “Schüco is a well-established company with a great reputation and quality products.”

Large glazed walls are created with generous Schüco sliding doors with large panes of triangular glass above them, constructed

using a Schüco façade system.

Enid says, “We love our new extension, it has totally transformed the house. We wanted the extension to have an edge to it, it had to go with the feel of the old building but not pretend to be a part of it. This is where Schüco came in, we couldn't have carried out our vision without them.”

The extension is open plan but has two different levels giving each area a separate sense of space.

Enid explains, “Wherever I am in the space, the amount of glass means I feel very connected to nature and the outdoors. It can be exciting to experience wild storms while safe and warm in our glass bubble.”

By modifying an existing building and giving thoughtful consideration to the design and materials to minimise environmental impact, Enid and Huw have created a contemporary home that honours its heritage.



Picturesque views all year round

Project type:
Residential extension

Location:
Northamptonshire

Schüco products:
ASS 70 FD bi-fold doors
AWS 70 SC windows

Design and build:
Thomas Charles Grant Ltd

Photography:
John Selby



The extension and re-rendering of this beautiful house in the tranquil scenery of Northamptonshire was a carefully considered project. Homeowners, Chris and Gillian, wanted to be able to take advantage of the picturesque views at all times of year, whatever the weather.

The UK has a reputation for unpredictable weather – you can experience four seasons in one day – so weathertight windows that enhance the comfort of the living space were a necessity for Chris and Gillian: “the large expanse of glass traps the heat wonderfully well, as well as helping to circulate fresh air throughout our home – it’s a really important part of the design.”

The large windows and bi-fold doors have enabled Chris and Gillian to soak up views of the surrounding countryside at all times of day. “It’s wonderful having people over. Everybody has remarked on how beautiful the house is and how it has such a modern

feel yet still has a sense of belonging among the surrounding environment. The whole project was worth the wait”.

The bespoke gable windows are another eye-catching feature. Tom Grant and his team of fabricators at Thomas Charles Grant Ltd, one of our Schüco partners, thought long and hard about the design, manufacture and installation of the Schüco systems. They managed to install the windows deep into the recess to allow for a generous interior windowsill.

When asked about the most successful elements of the renovation, Chris instantly commented on the doors and windows and the contribution they make to the aesthetic of their home. “The bi-fold doors are probably my favourite element of the house – we have three of them in total and they are simply beautiful. It’s clear to me why Schüco is considered one of the best on the market”.



Schüco windows and doors create visual accents while enabling homeowners, Chris and Gillian to enjoy the picturesque countryside views

Safe and Secure with Schüco



Today's world is anything but certain, so one of our priorities is to ensure that your home always feels safe and secure.

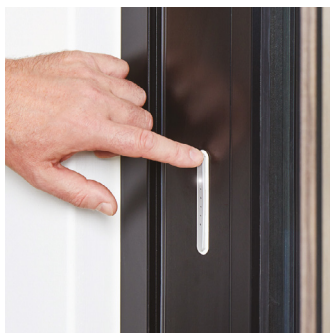
All of our systems have been tested to meet rigorous European and / or UK standards for burglar resistance.



Photo: Logan Irvine-MacDougall



Muti-point locking:
the ultimate security option



Open and close windows and
sliding doors at the touch of
a button



Smart homes begin at the
front door

SafeMatic

When it comes to locks, we have a range of options to suit the level of security you are looking for, from simple mortice locks to multi-point locking systems.

For the most secure entrance doors we have the SafeMatic self-locking 5-point lock. The locking points anchor themselves automatically in the door frame as soon as the door closes, without needing to turn a key.

TipTronic

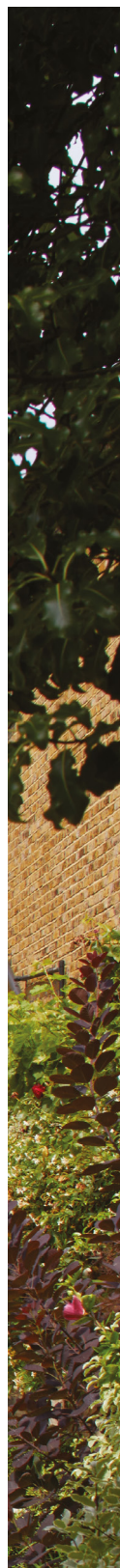
The ultimate in domestic luxury, the Schüco TipTronic window and sliding door opening system is an option you may find hard to resist. The unit is concealed in the frame and may be activated either by a multi-function button on the handle, a wall-mounted switch or a remote control.

Suitable for inward opening windows and the latest ASE sliding door generation, Schüco TipTronic is particularly useful for large sliding doors or hard-to-reach units such as fanlights.

BlueCon

For entrance doors, the Schüco BlueCon access control module has all the answers. A Smartphone app (downloadable from Android or iOS), enables complete keyless operation, activating the door lock when the user is 4 metres away.

It can also be programmed to enable entry by your children, your au pair, your cleaner or tradespeople.



Energy efficient comfort – all year round

The drive towards zero carbon homes requires every element of a building to demonstrate really effective energy efficiency.

The elegant Schüco aluminium systems are designed with thermal insulation built in. When combined with double or triple glazing, our doors and windows will easily meet the most stringent building regulation requirements, keeping precious heat inside and reducing winter energy consumption.

Our highly engineered systems provide excellent airtightness too, ensuring draught-

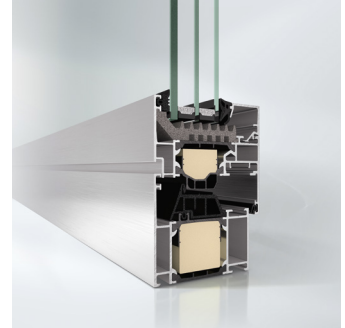
free comfort all year round. They will be suitable for super-efficient home design standards such as Passive House.

For hotter summers, our systems all include a range of opening options to maximise ventilation while integral blinds and shading options will address summer solar gain on south or west-facing aspects.

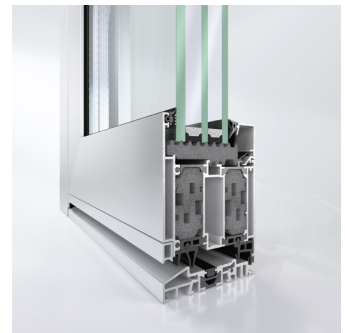
Our technical team is on hand to answer specific questions around the most suitable designs for the climate conditions in your area.



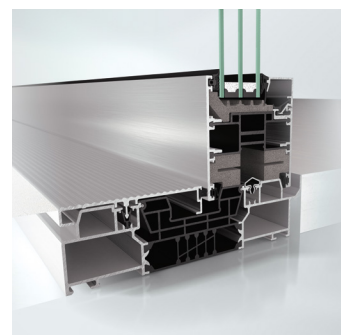
Insulation



The super-insulated Schüco AWS 75.SI window with triple-glazing



The Schüco AD UP door range provides excellent thermal insulation



The Schüco ASE 80.HI sliding and lift-and-slide door offers high insulation to Passive House level

The finishing touches

You can really feel the quality of a Schüco system when you touch it. Our handles feel reassuringly strong and robust while their ergonomic engineering ensures flawless operation for life.

Designed especially for Schüco, our range of handles make their own design statement, adding elegance and class to the systems they operate.



A splash of colour

Your Schüco system should be as individual as your home. Not only will every product be custom-made to your requirements, but there is also a huge range of colours and finishes to choose from for both inside and outside surfaces.

Understated elegance or bold colour accents? It's your choice. The durable polyester powder coatings are hard-wearing and fade-resistant, keeping up appearances for decades to come.

We hope that you have enjoyed and feel inspired by this brochure. Schüco door, window and façade systems are designed and engineered in Germany and manufactured and installed in the UK and Ireland by our network of partners. For further information on all Schüco products and to contact a partner company, go to **www.schueco.uk/view**

SCHÜCO

SCHÜCO

Follow us [@schueco_uk_ltd](#) on Instagram
Find us on Facebook & Pinterest



Visit our showroom:

Schüco UK head office
Whitehall Ave, Kingston,
Milton Keynes, MK10 0AL
T: 01908 282 111
mkinfobox@schueco.com

Schüco London
Overland House, 153 Great
Portland St, London W1W 6QW
T: 020 7704 0701
london@schueco.com

